



## MetaSoft Web™: Distribute your process models on the web

MetaSoft Web is an active web server facility that encourages communication and consensus-building by letting you publish and view your WorkFlow Analyzer models on your corporate Intranet and also over the World Wide Web. MetaSoft Web combines high performance for model and diagram access, high image quality, ease of administration, and support for all popular browsers. To see a live sample of MetaSoft Web in action, please point your browser to <http://MetaSoftWeb.metasoftware.com>.

Because Meta Software licenses MetaSoft Web on a per-server basis, there is virtually no limit to the number of people in your organization who can view your valuable process assets by surfing to the MetaSoft Web's URL on your corporate Intranet.

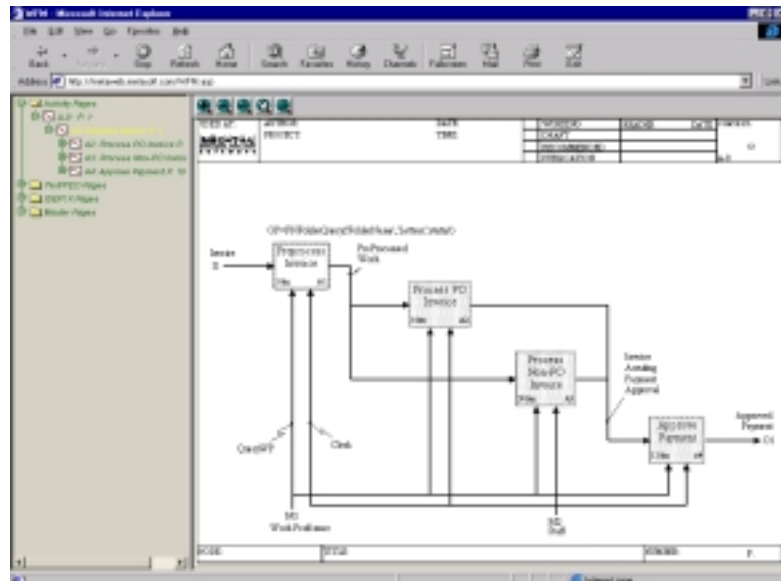
The MetaSoft Web product installs simply on a Windows NT 4.0 server running the Microsoft IIS 4.0 web server, which is included with the Windows NT distribution media. The only client requirement is a computer running a level 4 browser such as Netscape Navigator or Microsoft Internet Explorer.

Administration is a snap. MetaSoft Web has built-in administration utilities, so administrators can upload files to the web site directly from their browser. An extra level of integration allows a user to publish a model directly from WorkFlow Modeler via a menu command.

At right is a sample MetaSoft Web screen shot from an Internet Explorer browser running on a Windows 95 PC.

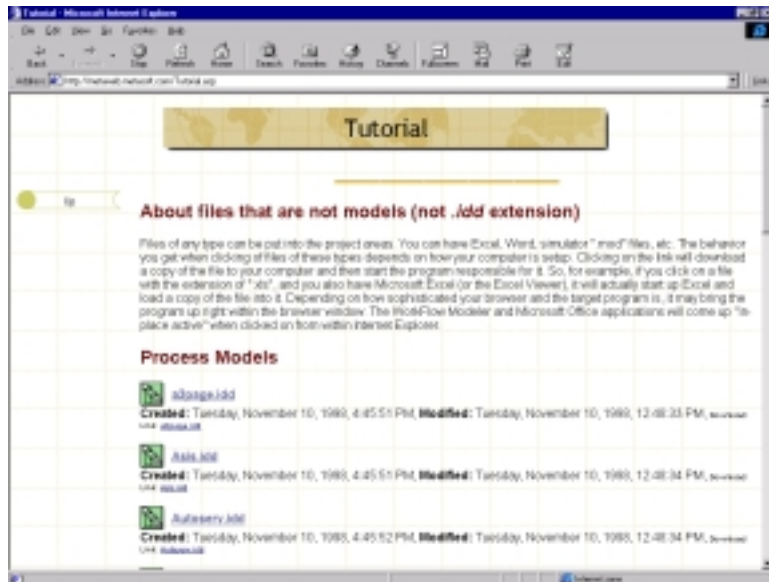
The left panel shows the model's active node tree with levels that can be expanded and collapsed by clicking on the plus or minus sign. The model is displayed in the right-hand panel. The activity boxes are created as

"hyperlinks," allowing you to display the decomposition diagram. The buttons on the top allow you to request the image in a variety of zoom scales. Another button allows you to display the top-level "parent" diagram. IDEF1X data models, Text, and FEO pages can also be viewed. MetaSoft Web supports the static imaging of embedded OLE objects.



To view models, you first access MetaSoft Web and browse through the set of models that have been uploaded by the administrator. MetaSoft Web supports the upload of all file formats, not only WorkFlow Analyzer models. Administrators can choose to organize these files in a flat structure or create a hierarchical web structure. MetaSoft Web is easily administered with Microsoft FrontPage or any other site administration tool.

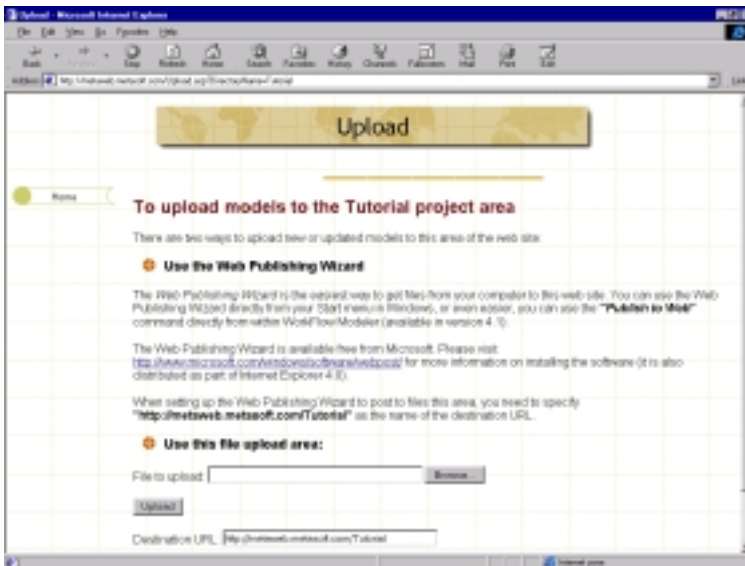
At right is a sample MetaSoft Web page listing the models available for viewing. As models are uploaded, they are automatically added to the list with no HTML coding necessary.



### MetaSoft Web benefits

- *Cost-effective.*

MetaSoft Web provides wide distribution of your corporate process model assets for a low cost. Our per-server licensing effectively gives you a site license for distributing models to all who can connect to the MetaSoft Web server.



- *Simple to administer.*

At left is the standard file upload screen. Administrators use their web browser to move files to the web server from their local PC.

- *Multiple platforms.*

MetaSoft Web requires no extra client-side installation and supports many systems, including Windows, Macintosh, Unix, and Network Computer. MetaSoft Web uses leading-edge technologies including Java,

JavaScript, Active Server Pages, and PNG graphics images.

### System Requirements

MetaSoft Web requires Windows NT 4.0 Server and Microsoft IIS Web Server 4.0. The server requires 64MB RAM minimum, 128MB recommended. MetaSoft Web requires 10MB disk space, with additional space for model storage. The client can be any system running a level 4 web browser. For small groups, MetaSoft Web can also be installed on a Windows 95, 98, or NT 4.0 workstation running Microsoft Personal Web Server.